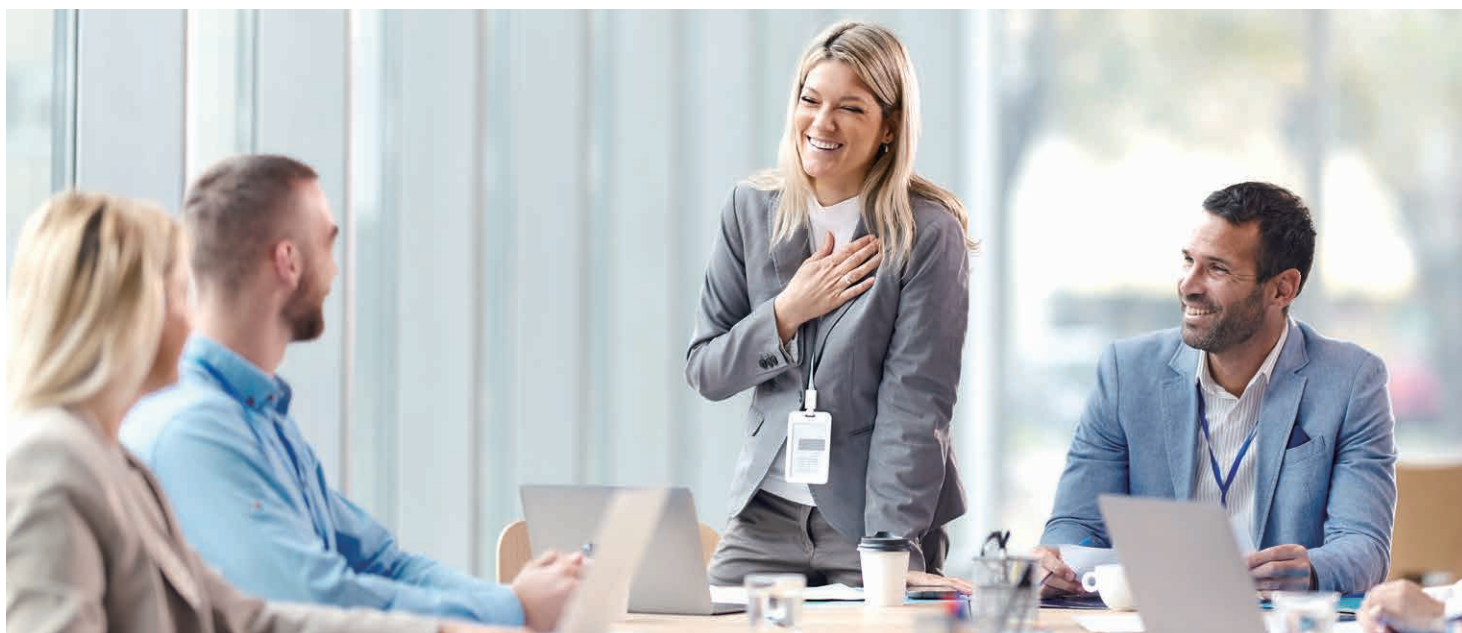




A3 Colour Multifunction Printer
Apeos C3061 / C2561 / C2061

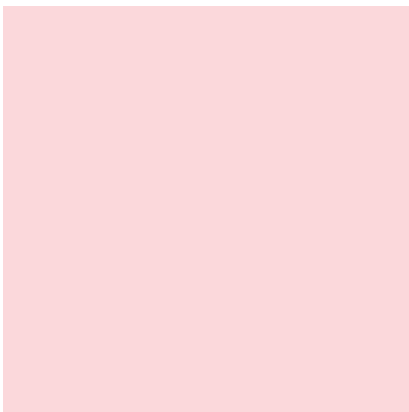
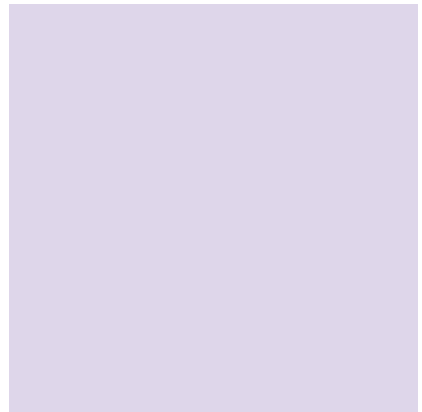
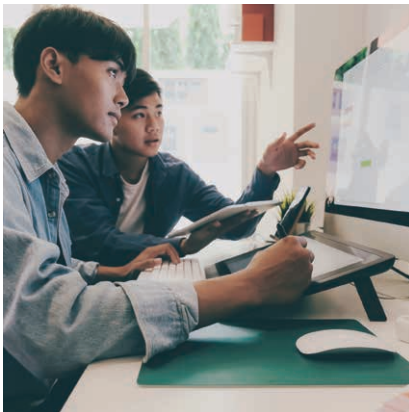
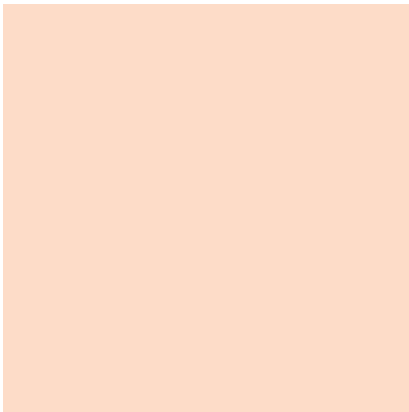


* The model in the photo is Model-CPS-B with optional 3 Tray Module.



Embark on your digital transformation journey

Designed to accelerate your digital transformation (DX) journey, new Apeos series with its smart and seamless integration features present itself as a trusted digital partner.



True scalable solutions to start your digital journey



Apeos C3061 / C2561 / C2061

Offering Scalability

Promote easier collaboration and enhanced accessibility with paperless office solutions.

Designing Simplicity

Designed for all, our devices deliver ease of use, accessibility and personalisation features for a true intuitive experience.

Creating Environmental Sensitivity

Driving organisation awareness towards creating a low impact environment with advance features such as low melting point (low energy) toner technology, smart power-saving sensors or staple-free finishing.

Apeos C3061

Colour/Monochrome
30 ppm*

Apeos C2561

Colour/Monochrome
25 ppm*

Apeos C2061

Colour/Monochrome
20 ppm*

* A4 LEF



Designing simplicity for everyday business needs

Small footprint fits in every office space

The compact design with width of 577 mm and depth of 659 mm* fits everywhere, including tight spaces, maximising office space utilisation.

* For 1 Tray standard configuration.

Produce promotional materials in-house and on-demand

Supports wide range of paper size and weight*¹, giving you the flexibility to personalise and print on envelope, direct mail, posters, promotional banners, or even long POP displays*².

*1: Paper weight from 52 to 300 gsm

*2: Long sheets up to 297 x 1,200 mm



Make an impression with every print

Newly developed toner produces exceptional colours in every tone and shade, while high resolution of 1,200 x 2,400 dpi delivers precise lines and text, giving every print a professional look.



Easy-to-use, 7-inch control panel

Effortless and intuitive operation at the touch of your finger

The home screen allows individual user to customise frequently used app buttons and arrangement based on individual preference. Frequently used settings can be "pinned" for easy access on daily basis.

Additionally, you can connect your mobile devices through QR code scanning or NFC to Copy, Fax*¹, Print and Scan*² jobs using the Print Utility*³ application.

*1: Optional

*2: Scan to Mobile, E-mail, Scan to Folder.

*3: Connect to the machine via wireless environment or Wi-Fi Direct connection. It can be downloaded free of charge from Google Play™ or App Store.

Note: AirPrint, Mopria® Print Service, and Mopria Scan are supported for printing or scanning by using a mobile device.



Finishing solutions that scale with business needs (Optional)

Exit 2 Tray, Side Tray

Supports output from three locations for Copy, Fax, and Print functions. This way, important received faxes are not missed, and output paper can be quickly retrieved.



Finisher-A3 + Side Tray



• Staple

3 Way output

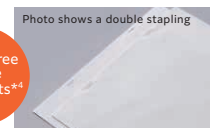
Quiet design

Finisher-B4 / B5 + Booklet Maker Unit + Side Tray



• Staple
• Staple-free Staple*¹
• Punch*²
• Saddle Staple*³
• Single Fold*³

Supports single and double Staple-free Stapling*⁴



Staple-free Staple 10 Sheets*⁴

*1: Staple-free stapling is available with Finisher-B5. *2: Optional *3: Booklet Maker Unit is required. When specifying Saddle Staple or Single Fold with Finisher-B4/B5, paper is not folded but creased. *4: 80 gsm paper or less.

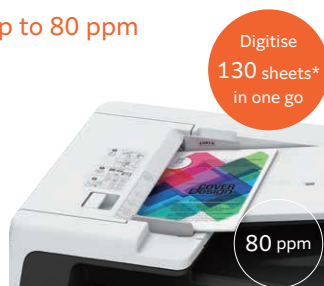
Promotes DX and collaboration with paperless office solutions

Quick digitisation of high-volume originals

1 pass, 2-sided scanning of up to 80 ppm

The high-speed 1-pass, 2-sided scanning Automatic Document Feeder holds up to 130 sheets* and scans 2-sided document in one go, allowing you to digitise large documents swiftly and effortlessly.

Note: Installed for Model-CPS-B as standard.
* 70 gsm



The large grip width makes it easier to lift the automatic document feeder.

- Supports scanning of small-size documents (49 x 85 mm), thick cheques and thin paper receipts (38 to 128 gsm).
- Scanned documents can be transferred to e-mail, PC, or shared servers.
- Supports multi-sending, such as saving a copy to your PC while sending an e-mail to a client in a single scan.

Streamline operations with paperless fax*

Preview before print to reduce wastage

Content of received fax can be previewed on the control panel before printing, allowing you to delete unwanted documents such as unsolicited faxes and print only what is necessary to avoid paper wastage.

Don't miss important faxes, whether you are in the office or on the move

Faxes received can also be forwarded by e-mail, allowing you to check the content even when you are away from office.

* Optional



Automate the tedious task of fax sorting with Paperless Fax Delivery*

By using Paperless Fax Delivery*, faxed documents can be automatically sorted and forwarded without printing. Manual sorting and organising of received documents are eliminated as they are automatically sorted into folders based on information such as fax number, received date and preregistered names in multifunction printer's address book.

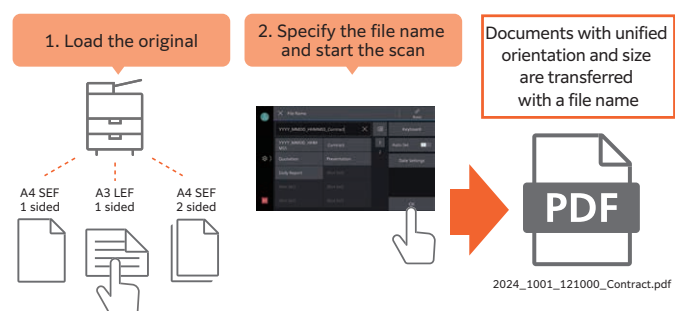
*Optional

Simple scanning to yourself

With ScanAuto, the pre-installed multifunction printer add-on application, you can easily send scanned data with a touch of a button and the multifunction printer will automatically select scan settings (such as document orientation, 1-sided or 2-sided) that are suitable for the document.

File names can be assigned from presets on the UI screen, ensuring scanned files will not get lost on the PC.

Note: The destination can be selected from Scan (Email) or Scan (to PC)



Digitisation of paper documents for effortless document management

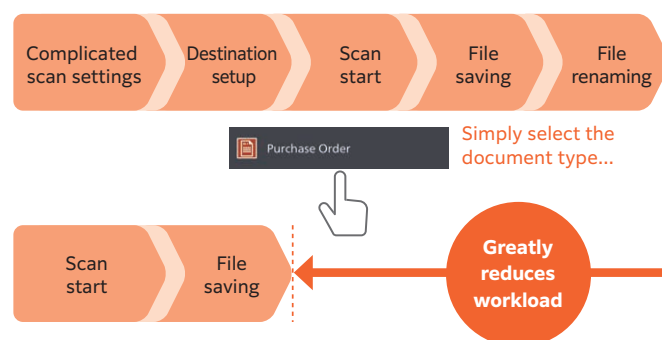
Scan Delivery Light* reduces your scanning workload by simplifying complicated and repetitive scanning workflow.

Standard rules and templates can be created easily, allowing you to complete multiple actions (scan settings, storage destination designation and file renaming) with a single touch.

Scanned information can also be managed and utilised centrally, improving productivity and resource optimisation.

* Optional

Scan Delivery Light



Safeguarding your DX journey with market-leading security

As network connected information devices, the multifunction printer is equipped with state-of-the-art security features to protect your valuable information assets from cyber-attacks and rapidly evolving security threats.

Protect from unauthorised user

- Unauthorised operations and access are prevented by user authentication and usage restrictions.
- Expansion with Secondary Ethernet* allows a single multifunction printer to be used on a separated network, etc.

* Optional

Protects Data

- Encryption of communication paths with TLS and IPsec
- Protection of scanned files and e-mails through encryption/ electronic signatures
- Data writing to SSD is encrypted with robust AES-256 encryption, etc.

Protect from unauthorised access

- Account lock function
- Restriction of accessible IP addresses
- Prevention of software tampering during multifunction printer startup and operation
- Automatic repair function upon detection of tampering at startup, etc.

Prevent information leaks due to operational errors

- Fixing the delivery destination of scanned documents
- Double input of fax destinations, etc.

The multifunction printers of the future

FUJIFILM Business Innovation aims to address environmental issues through climate change mitigation and resource circulation efforts in our business activities. Our products are developed with unique innovations and technologies that balances environmental impact reduction and usability.

New toner and a fusing unit with low fixing temperature and high image quality

Adopted a new toner and a fusing unit that enable reducing power consumption during toner fixing, the most power-consuming process in multifunction printers.

By using functional resin, our newly developed toner has achieved industry-leading low fixing temperature*¹ that is 15 degrees lower than the toner used in previous models*².

In addition, the adoption of a new fixing unit achieved both low fixing temperature and exceptional image quality.

*1: As of July 2024, according to our survey.

*2: Toner used in the Apeos C3060 / C2560 / C2060.

Designed for now and for the future

In the effort to promote recycling of resources, recycled plastic materials are used* for parts such as the front cover and trays. We have overcome challenges to devise ways to suppress uneven color of the appearance of recycled plastic, which is said to be difficult to mold. And by improving the strength and rigidity of the parts, we ensure the quality of the product.

Furthermore, our products have been redesigned to allow easy disassembly and cleaning, making them easy to reuse and recycle in the future.

* In the case of 4 Tray configuration with Duplex Automatic Document Feeder. 15 % of the total plastic weight of the device is recycled material.

Technologies for energy conservation

- Less energy and compact with high resolution printing on LED printhead.
- Saves energy with quick startup and smart power saving feature that solely powers on the required parts according to the functions being used by users.

Contributing to smaller CO₂ emission with lightweight body

By optimising resin and sheet metal with thinning technology and revising the frame structure, we have achieved a reduction in body weight by 10 %* while maintaining the strength and contributing to CO₂ emissions reduction in logistics.

* For Model-CPS-ST with 4 Tray configuration. Compared to the previous model Apeos C3060 / C2560 / C2060 Model-CPS with 4 Tray configuration, including toner.

Reliable support system

Easy solutions to resolve problems

From supplies replacement to unexpected device failures, most problems can be resolved without waiting for the service representatives or sales representatives.

1. Resolve problem using the "Help" function on the device

- Self Help information is available on the control panel
- Self Help information can be accessed via the mobile device by scanning the QR code displayed on the control panel

2. "Remote Assistance" with the help of operators

- Connects directly to the Support Centre
- An operator will remotely access the multifunction device to resolve the problem by guiding through the steps on the shared control panel

Keeping a close eye on your multifunction device on a daily basis

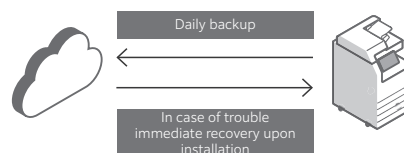
Connecting your multifunction printer to our EP service* via the internet allows for checking of billing meter, automatic delivery of consumables when cartridges level is low, daily status monitoring, and machine error detection for early intervention to rectify problem. This minimises operation downtime and reduces administrator's burden.

Note: The content of the services provided may vary depending on the usage region. For details, please contact one of our sales representative.

* You need to apply for using the EP service. (free of charge)

Device Setup Editor

Device Setup Editor is a service that always backs up the latest setting information to a cloud server. It allows you to be prepared for unexpected situations and use your multifunction printer with confidence.



Note: You need to apply for using the Device Setup Editor. (free of charge).

Set up and manage remote multifunction printers from the Remote Operation Panel

By launching the Remote Operation Panel from a web browser, the multifunction printer's control panel can be displayed to and operated from a PC. By logging into Administrator Mode, the system administrator can manage multifunction printers at remote business locations within the same intranet.

Note: Within the same intranet. While the Remote Operation Panel is active, the multifunction printer's control panel cannot be operated. Additionally, the Remote Operation Panel cannot be launched while the user is operating the multifunction printer.

Apeos C3061 / C2561 / C2061

Functions & Specifications

Basic Specifications / Copy Function

| Item | C3061 | C2561 | C2061 |
|---|---|--|---|
| Type | Desktop / Console | | |
| Memory Capacity | 4 GB (Max: 4 GB) | | |
| Storage Device Capacity*1 | Model-CPS-B: 256 GB Model-CPS-ST: 3.6 GB (Optional: 256 GB) *2 | 3.6 GB (Optional: 256 GB) *2 | |
| Colour Capability | Full Colour | | |
| Scan Resolution | 600 x 600 dpi | | |
| Printing Resolution | 1,200 x 2,400 dpi | | |
| Warm-up Time*3 | [Embedded Plug-ins / Custom Services] *4 When enabled: 26 seconds or less (23 degrees Celsius room temperature) When disabled: 22 seconds or less (23 degrees Celsius room temperature) | | |
| Recovery Time (Recovery Time from Sleep Mode) | 13.6 seconds or less (23 degrees Celsius room temperature) | 11.0 seconds or less (23 degrees Celsius room temperature) | |
| Original Size | Maximum of A3, 11 x 17", 297 x 432 mm for both Sheet and Book | | |
| Paper Size | Tray 1 | Max: A3, 11 x 17", Min: A5 SEF, Envelope*5, Postcard (100 x 148 mm) Custom Size: 90 x 98 mm to 297 x 432 mm | |
| | Tray 2, 3, 4 | Max: A3, 11 x 17", Min: A5 SEF Custom Size: 140 x 182 mm to 297 x 432 mm | |
| | Bypass Tray | Max: A3, 11 x 17", Min: A5 SEF, Envelope*6, Postcard (100 x 148 mm) Custom Size: 89 x 98 mm to 297 x 432 mm | |
| | Image loss width*7 | Lead edge 4.0 mm, Trail edge 2.0 mm, Right / Left edge 2.0 mm | |
| Paper Weight*8 | Paper Tray | 52 to 300 gsm | |
| | Bypass Tray | 52 to 300 gsm | |
| First Copy | B/W*9 | 4.6 sec. | 5.9 sec. |
| Output Time | Colour*10 | 6.0 sec. | 7.9 sec. |
| Continuous Copy Speed*11 | A4 LEF / JIS B5 LEF | B/W: 30 ppm Colour: 30 ppm | B/W: 25 ppm Colour: 25 ppm B/W: 20 ppm Colour: 20 ppm |
| | A4 | B/W: 23 ppm Colour: 23 ppm | B/W: 19 ppm Colour: 19 ppm B/W: 16 ppm Colour: 16 ppm |
| | JIS B5 | B/W: 17 ppm Colour: 17 ppm | B/W: 14 ppm Colour: 14 ppm B/W: 11 ppm Colour: 11 ppm |
| | JIS B4 | B/W: 20 ppm Colour: 20 ppm | B/W: 16 ppm Colour: 16 ppm B/W: 13 ppm Colour: 13 ppm |
| | A3 | B/W: 17 ppm Colour: 17 ppm | B/W: 14 ppm Colour: 14 ppm B/W: 11 ppm Colour: 11 ppm |
| | | Standard | 520 sheets x 1-tray + Bypass Tray 96 sheets |
| Paper Tray Capacity*12 | Optional | 1 Tray Module / 1 Tray Module with Cabinet: 520 sheets x 1-tray 3 Tray Module: 520 sheets x 3-tray | |
| | Max | 2,176 sheets [Standard + 3 Tray Module] | |
| Output Tray Capacity*13 | [Model-CPS-B] Upper Center: 250 sheets (A4 LEF), Lower Center: 250 sheets (A4 LEF) [Model-CPS-ST] 400 sheets (A4 LEF)*14 | | 400 sheets (A4 LEF) *14 |
| Power Supply | AC220-240 V +/- 10 %, 8 A, 50/60 Hz common | | |
| Maximum Power Consumption | 1.76 kW (AC220 V +/- 10 %), 1.92 kW (AC240 V +/- 10 %) Sleep Mode: 0.3 W (AC230 V +/- 10 %) Low Power Mode: 43 W (AC230 V +/- 10 %) Ready Mode: 66 W (AC230 V +/- 10 %) | | |
| Dimensions | Model-CPS-B: | | W 577 x D 659 x H 769 mm |
| | W 577 x D 659 x H 775 mm | | W 577 x D 659 x H 872 mm |
| | W 577 x D 659 x H 878 mm (when optional 1 Tray Module is installed.) | | (when optional 1 Tray Module is installed.) |
| | W 587 x D 659 x H 1,126 mm (when optional 1 Tray Module with Cabinet is installed.) | | W 587 x D 659 x H 1,120 mm (when optional 1 Tray Module with Cabinet is installed.) |
| | W 587 x D 659 x H 1,126 mm (when optional 3 Tray Module is installed.) | | W 587 x D 659 x H 1,120 mm (when optional 3 Tray Module is installed.) |
| | Model-CPS-ST: | | W 577 x D 659 x H 1,120 mm (when optional 1 Tray Module is installed.) |
| | W 577 x D 659 x H 769 mm | | W 577 x D 659 x H 872 mm (when optional 1 Tray Module is installed.) |
| Weight*15 | W 577 x D 659 x H 872 mm (when optional 1 Tray Module is installed.) | | W 587 x D 659 x H 1,120 mm (when optional 1 Tray Module with Cabinet is installed.) |
| | W 587 x D 659 x H 1,120 mm (when optional 1 Tray Module with Cabinet is installed.) | | W 587 x D 659 x H 1,120 mm (when optional 3 Tray Module is installed.) |
| | W 587 x D 659 x H 1,120 mm (when optional 3 Tray Module is installed.) | | |
| | W 587 x D 659 x H 1,120 mm (when optional 3 Tray Module is installed.) | | |

*1: Storage Device Capacity is not totally available for customers. *2: When the optional Storage (SSD) is installed. *3: It may change depending on usage conditions. *4: Embedded Plug-ins / Custom Services are enabled as factory default. *5: Supported standard envelope sizes are Commercial#10, Monarch 7 3/4, DL, ISO-C4, etc. *6: Supported standard envelope sizes are ISO-C4 and ISO-C5. *7: Up to A3 size. *8: It is recommended to use our recommended paper. Correct print output may not be possible depending on the requirement. *9: A4 LEF / Monochrome priority mode. *10: A4 LEF / Colour priority mode. *11: The speed may be reduced due to the image quality adjustment. *12: 80 gsm paper. *13: 70 gsm paper. *14: When installing the optional Exit 2 Tray, the Center Tray capacity is 250 sheets (A4 LEF), and the Exit 2 Tray capacity is 250 sheets (A4 LEF). *15: Excluding Toner Cartridge.

Print Function

| Item | Description |
|------------------------------|--|
| Type | Built-in type |
| Print Size | Tray 1 |
| | Tray 2, 3, 4 |
| | Bypass Tray |
| | Image loss width*3 |
| Continuous Print Speed*4 | Same as the Basic Specifications / Copy Function |
| Printing Resolution | Standard |
| | Optional |
| Page Description Language | Standard |
| | Optional |
| Supported Operating System*5 | Standard |
| | Optional |
| | Standard |
| | Optional |
| Interface | Standard |
| | Optional |

*1: Supported standard envelope sizes are Commercial#10, Monarch 7 3/4, DL, ISO-C4, etc. *2: Long paper of 106 to 220 gsm (Extra Heavyweight) is available. The printed papers are delivered to the Side Tray when Finisher-A3 is attached. *3: Up to A3 size. *4: The speed may be reduced due to the image quality adjustment. The printing speed may be reduced depending on the document. *5: Please refer to our official website for the latest supported OS.

Scan Function

| Item | Description |
|-----------------|---|
| Type | Colour Scanner |
| Scan Resolution | 600 x 600 dpi, 400 x 400 dpi, 300 x 300 dpi, 200 x 200 dpi |
| Scan Speed | Same as the Scan Speed for the Duplex Automatic Document Feeder |
| Interface | Standard |
| | Optional |

Fax Function (Optional)

| Item | Description |
|----------------------|--|
| Original Size | Max: A3, 11 x 17", Long document (Longest 600 mm*1) |
| Recording Paper Size | Max: A3, 11 x 17", Min: A5 |
| Transmission Time | 2 seconds and more but fewer than 3 seconds*2 |
| Transmission Mode | ITU-T G3 |
| Applicable Lines | Telephone subscriber line, PBX, Fax communication (PSTN), Maximum 3 ports*3 (G3-3 ports) |

*1: When Duplex Automatic Document Feeder is used. *2: When A4 size document with approximately 700 characters is transmitted in standard image-quality (8 x 3.85 lines/mm) and in high-speed mode (28.8 kbps or faster, JBIG). Only indicates the time for transmitting the image information and does not include the communication control time. The total communication time will vary depending on the contents of the document, the type of machine receiving the fax, and line condition. *3: No. of FAX lines is up to 3 ports. Port refers to number of channels for FAX.

Duplex Automatic Document Feeder B1-C

| Item | C3061 | C2561 | C2061 |
|--------------------------------|--|---|-------------------------------|
| Original Size*1 / Paper Weight | Max: A3, 11 x 17"; Min: A6 38 to 128 gsm (In Duplex: 50 to 128 gsm) | | |
| Capacity*2 | 110 sheets | | |
| Scan Speed*3 | Copy (A4 LEF, Simplex) | B/W: 30 ppm Colour: 30 ppm | B/W: 25 ppm Colour: 25 ppm |
| | Scan | B/W: 55 ppm, Colour: 55 ppm [Standard Document (A4 LEF), 200 dpi, to Folder] | |

Note: Installed for Model-CPS-ST as standard. *1: Custom Size is 125 x 85 mm to 297 x 432 mm. *2: 70 gsm paper. *3: The scanning speed varies depending on the documents.

Duplex Automatic Document Feeder B4-PC

| Item | C3061 | C2561 |
|--------------------------------|--|--|
| Original Size*1 / Paper Weight | Max: A3, 11 x 17"; Min: A6 38 to 128 gsm (In Duplex: 50 to 128 gsm)*2 | |
| Capacity*3 | 130 sheets | |
| Scan Speed*4 | Copy (A4 LEF, Simplex) | B/W: 30 ppm Colour: 30 ppm |
| | Scan | B/W: 80 ppm, Colour: 80 ppm (1 pass, 2 sided scanning: B/W 80 ppm, Colour 80 ppm) [Standard Document (A4 LEF), 200 dpi, to Folder] |

Note: Installed for Model-CPS-B as standard. *1: Custom Size is 49 x 85 mm to 297 x 432 mm. *2: Custom Sizes from 49 x 85 mm to 55 x 91 mm are available from 38 to 209 gsm. *3: 70 gsm paper. *4: The scanning speed varies depending on the documents.

Side Tray (Optional)

| Item | Description |
|---------------------|--------------------------------|
| Paper Capacity* | 100 sheets |
| Dimensions / Weight | W 328 x D 540 x H 198 mm, 3 kg |

* 70 gsm paper.

Notes

- 1) If the storage media of the base unit fail, loss of received data, accumulated data, registered setting data, etc. may occur. In no event shall "the company" be liable for any damages whatsoever arising from loss of data.
- 2) Functional spare parts will be available for at least 7 years after the product is no longer manufactured.

Finisher-A3 (Optional)

| Item | Description |
|------------------|---|
| Type | Center Tray Stack |
| | Finishing Tray Sort (Offset available*1*2) / Stack (Offset available*1*2) |
| Paper Size | Center Tray A4, A3 |
| | Finishing Tray Max: A3, 11 x 17"; Min: A6, Postcard (100 x 148 mm) Custom Size: 89 x 98 mm to 297 x 432 mm |
| Paper Weight | Center Tray 52 to 300 gsm |
| | Finishing Tray 52 to 256 gsm |
| Paper Capacity*3 | Center Tray A4 LEF: 125 sheets; A4 SEF, A3: 50 sheets |
| | Finishing Tray [Without Stapling] A4 LEF: 500 sheets; JIS B4: 250 sheets; A3 or larger: 200 sheets; Mixed Size Stacking*4: 250 sheets [With Stapling] A4 LEF: 30 sets or 500 sheets; JIS B4: 250 sheets; A3 or larger: 200 sheets; Mixed Size Stacking*4: 250 sheets |
| Staple | Capacity A4: 50 sheets (90 gsm or less), JIS B4 or larger: 30 sheets (90 gsm or less) |
| | Paper Size Max: A3, 11 x 17"; Min: JIS B5 LEF Custom Size: 203 x 182 mm to 297 x 432 mm |
| | Paper Weight 52 to 256 gsm |
| Position | Single stapling, Dual stapling |
| | Dimensions / Weight W 465 x D 484 x H 248 mm, 10 kg |

*1: [No Offset] is selected by factory default. *2: Outputs less than 190 mm width are delivered without offset stacking. *3: 70 gsm paper. *4: When larger size sheets are stacked on top of smaller size sheets: 250 sheets (when large size sheets are smaller than A3) / 200 sheets (when large size sheets are A3 or larger). The same applies to when staple-free and stapled bindings are mixed or different stapling positions are mixed.

Finisher-B4 / B5 (Optional)

| Item | Finisher-B4 | Finisher-B5 |
|---------------------|--|--|
| Type | Center Tray Stack | Center Tray Stack |
| | Finishing Tray Sort (Offset available*1*2) / Stack (Offset available*1*2) | Finishing Tray Sort (Offset available*1*2) / Stack (Offset available*1*2) |
| Paper Size*3 | Center Tray Max: A3, 11 x 17"; Min: A5; Custom Size: 148 x 148 mm to 297 x 432 mm | Center Tray Max: A3, 11 x 17"; Min: A5; Custom Size: 148 x 148 mm to 297 x 432 mm |
| | Finishing Tray Max: A3, 11 x 17"; Min: A5; Custom Size: 148 x 148 mm to 297 x 432 mm | Finishing Tray Max: A3, 11 x 17"; Min: A5; Custom Size: 148 x 148 mm to 297 x 432 mm |
| Paper Weight*4 | Center Tray 52 to 300 gsm | Center Tray 52 to 300 gsm |
| | Finishing Tray 52 to 300 gsm | Finishing Tray 52 to 300 gsm |
| Paper Capacity*5 | Center Tray 200 sheets (80 gsm or less) | Center Tray 200 sheets (80 gsm or less) |
| | Finishing Tray [Without Stapling] A4: 2,000 sheets, JIS B4 or larger: 1,000 sheets, Mixed Size Stacking*6: 300 sheets [With Stapling] A4: 100 sets or 1,000 sheets*7, JIS B4 or larger: 75 sets or 750 sheets [With Booklet Finishing*8] 50 sets or 600 sheets [With Fold*8] 500 sheets | Finishing Tray [Without Stapling] A4: 2,000 sheets, JIS B4 or larger: 1,000 sheets, Mixed Size Stacking*6: 300 sheets [With Stapling] A4: 100 sets or 1,000 sheets*7, JIS B4 or larger: 75 sets or 750 sheets [With Booklet Finishing*8] 50 sets or 600 sheets [With Fold*8] 500 sheets |
| Capacity | 50 sheets (90 gsm or less) | Staple: 50 sheets (90 gsm or less) Staple-free Staple*9*10: 10 sheets (80 gsm or less) |
| | Paper Size Max: A3, 11 x 17"; Min: A5 LEF Custom Size: 210 x 148 mm to 297 x 432 mm | Paper Size Max: A3, 11 x 17"; Min: A5 LEF Custom Size: 210 x 148 mm to 297 x 432 mm |
| Paper Weight | 52 to 256 gsm | Staple: 52 to 256 gsm Staple-free Staple*9*10: 64 to 105 gsm |
| | Position Single stapling, Dual stapling | Position Single stapling, Dual stapling |
| Punch*11 | Paper Size Max: A3, 11 x 17"; Min: A5 LEF Custom Size: 210 x 148 mm to 297 x 432 mm | Paper Size Max: A3, 11 x 17"; Min: A5 LEF Custom Size: 210 x 148 mm to 297 x 432 mm |
| | Paper Weight 52 to 220 gsm | Paper Weight 52 to 220 gsm |
| Number of Holes | 2-hole / 4-hole punch or 2-hole / 3-hole punch (US Specifications) | 2-hole / 4-hole punch or 2-hole / 3-hole punch (US Specifications) |
| | Paper Size Max: A3, 11 x 17"; Min: A4, Letter Custom Size: 210 x 279 mm to 297 x 432 mm | Paper Size Max: A3, 11 x 17"; Min: A4, Letter Custom Size: 210 x 279 mm to 297 x 432 mm |
| Booklet Finishing*8 | Capacity Saddle Staple: 15 sheets; Single Fold: 5 sheets | Capacity Saddle Staple: 15 sheets; Single Fold: 5 sheets |
| | Paper Weight Saddle Staple: 64 to 80 gsm*13, Single Fold: 64 to 105 gsm | Paper Weight Saddle Staple: 64 to 80 gsm*13, Single Fold: 64 to 105 gsm |
| Dimensions*14*15 | W 618 x D 653 x H 1,047 mm With Booklet Maker Unit: W 618 x D 673 x H 1,076 mm | W 618 x D 653 x H 1,047 mm With Booklet Maker Unit: W 618 x D 673 x H 1,076 mm |
| | Weight 26 kg Punch Module: + 2 kg, Booklet Maker Unit: + 10 kg | 28 kg Punch Module: + 2 kg, Booklet Maker Unit: + 10 kg |

Note: Finisher-B4 / Finisher-B5 is available only when optional 1 Tray Module with Cabinet or 3 Tray Module is attached to Main Unit. Note: Only stapled stapling is available with Finisher-B4. You cannot add staple-free stapling function. Note: Both stapled stapling and staple-free stapling are available with Finisher-B5. Note: Kit Finisher-B4/B5 INST is required.

*1: The offset feature is set to disabled by factory default. *2: Outputs whose weight is 257 gsm and more or width is less than 210 mm are delivered without offset stacking. *3: Paper in the sizes larger than A3 or 11 x 17" or smaller than A5 are delivered to the Centre Tray. *4: Documents may not be printed correctly depending on usage conditions. (52 to 55 gsm, 257 gsm and more) *5: 70 gsm paper. *6: When larger size sheets are stacked on top of smaller size sheets. *7: 75 sets or 750 sheets with dual stapling. *8: The Booklet Finishing function requires the optional Booklet Maker Unit for Finisher-B. Make a crease allows you to fold easily. After a job with the Booklet Finishing function specified has been output, the next job may not be delivered until the sheets are removed from the output tray. Also, if larger size sheets are stacked on top of smaller size sheets after a job with the Booklet Finishing function specified has been run, the next job may not be delivered until the sheets are removed from the output tray. *9: Staple-free stapling is available with Finisher-B5. *10: Staple-free stapling does not have binding force equal to stapled stapling. Bound part may be easily separated depending on the paper, temperature, humidity, and how the page is turned over. *11: The Punch function requires the optional 2/4 Hole Punch Module for Finisher-B or US 2/3 Hole Punch Module for Finisher-B. *12: Available number of punch holes varies depending on the paper size. *13: Covers can be up to 220 gsm (Extra Heavyweight). *14: Inner connector within the body is excluded. *15: When the Extension Tray is pulled out.

Duplex Automatic Document Feeder

B4-PC (1 pass, 2 sided scanning)
Standard for Model-CPS-B

B1-C
Standard for Model-CPS-ST

Note: Not available as an option.



Long Paper Inserter

1 Tray Model

Standard Scan to /
Print from USB Memory

Optional Tray Module

1 Tray Module

1 Tray Module with Cabinet

3 Tray Module

Finishers



Finisher-A3



Finisher-B5*
Supports Staple-free
Stapling

Booklet Maker Unit for Finisher-B



Finisher-B4*

2/4 Hole Punch Module for Finisher-B
2/3 Hole Punch Module for Finisher-B



Exit 2 Tray
Standard for Model-CPS-B,
Optional for Model-CPS-ST

FUJIFILM

FUJIFILM Business Innovation (Thailand) Co., Ltd.

123 Suntowers A Building, 23rd-26th Floor, Vibhavadi-Rangsit Road,
Chomphon, Chatuchak, Bangkok 10900
Tel: 02-660-8000 Fax: 02-617-6748-9 Call Center: 02-660-8400

บริษัท ฟุจิฟิล์ม บิสซิเนส อินโนเวชั่น (ประเทศไทย) จำกัด

123 อาคารชั้นทาวเวอร์ เอ ชั้น 23-26 ถนนวิภาวดีรังสิต จอมพล จตุจักร กรุงเทพฯ 10900
โทร: 02-660-8000 แฟกซ์: 02-617-6748-9 Call Center: 02-660-8400

fujifilm.com/fbth

FUJIFILM Business Innovation aims to address environmental issues through climate change mitigation and resource circulation efforts.

The available model varies depending on the country/region. Please ask the sales representatives for details.

The product specifications, appearance and other details in this brochure are subject to change without notice for improvements.

Reproduction Prohibitions Please note that reproduction of the following is prohibited by law : •Domestic and foreign currencies, government-issued securities, and national bonds and local bond certificates. •Unused postage stamps, post cards, etc. •Certificate stamps stipulated by law. •Reproducing works forming the subject matter of copyright (literary works, musical works, paintings, engravings, maps, cinematographic works, drawings, photographic works, etc.) is not permitted unless the reproduction is for the purpose of personal use, family use or other similar uses within a limited circle.

Trademarks •FUJIFILM and FUJIFILM logo are registered trademarks or trademarks of FUJIFILM Corporation. •Apeos, DocuWorks, Working Folder, and Cloud Service Hub are registered trademarks or trademarks of FUJIFILM Business Innovation Corp. •Microsoft, Active Directory, Azure, Microsoft Entra, Microsoft Edge, Excel, OneDrive, PowerPoint, SharePoint, Microsoft Teams, Windows, and Windows Server are registered trademarks of US Microsoft Corporation in the U.S. and other countries. •Apple, Mac, macOS, OS X, AirPrint, and AirPrint logo are trademarks of Apple Inc. registered in the U.S. and other countries and regions. •Adobe, Adobe logo, PostScript, and PostScript logo are either registered trademarks or trademarks of Adobe in the United States and/or other countries. •Mopria, the Mopria Logo, and the Mopria Alliance word mark and logo are registered and/or unregistered trademarks and service marks of Mopria Alliance, Inc. in the United States and other countries. •QR Code is a registered trademark of DENSO WAVE INCORPORATED. •All product names and company names mentioned in this brochure are trademarks or registered trademarks of their respective companies.

For Your Safety
Before using the product, read the Instruction Manual carefully for proper use. Use the product with the power source and voltage specified. Be sure to establish ground connection. Otherwise, electronic shock may result in the case of a failure or short circuit.